

## ZP7-SB1

Analogue sensor base - surface mounting

### Simple twist and lock action

ZP7-SB1 common mounting base, allows any ZP700 analogue sensor to be removed or replaced without disconnecting loop wiring from sensor terminals. Sensors plug into the base unit with a simple twist and lock action, allowing quick and easy removal for cleaning and servicing, or reselection of device type should the usage of the protected area change. Forming an integral part of the overall sensor assembly, sensor bases are provided with slots for screw fixing direct to ceiling structures, or to auxiliary wiring plates, or conduit boxes with screw fixing centres between 50 mm and 90 mm.

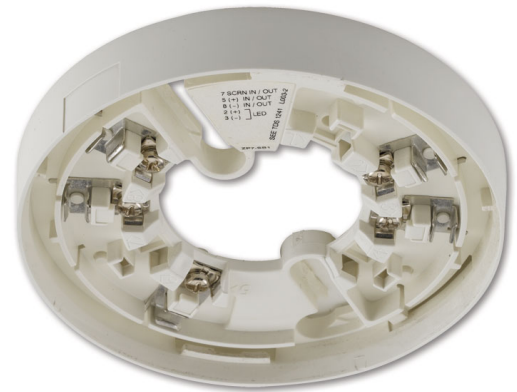
### Robust wiring terminals

Bases feature robust wiring terminals with captive clamping washers to ensure secure wiring termination. The bases are of shallow design with ample space to accommodate cables of all types. Terminals are provided inside the moulding for loop connections and the termination of cable screening. Provision is also made for the connection of a remote LED when required.

### Automatic locking option

In order to prevent unauthorised removal of a device from its base, an automatic locking breakout is incorporated into of all sensor mouldings. If the breakout is removed, sensors can then only be released from their bases by use of a Ziton detector head picker (Z-PH-2). The locking facility is an easily applied option, often taken on site, at the system commissioning stage.

Matching spaces for address labels are provided on sensor and base mouldings - ensuring that when removed, devices are replaced in the correct location. The address number facility also enables sensors to be easily identified when viewed from floor level.



### Standard Features

- Common to all Z700 series detectors
- Automatic locking option
- Address identification label
- Ease of installation

### Specifications

Model No	ZP7-SB1
Specification	EN54 (with relevant sensor)
Description	Analogue sensor base - surface fixed
Compatibility	All ZP analogue systems
Mounting	Direct to ceiling, conduit box or auxiliary wiring plate
Wiring	2 core loop or spur
Monitoring	Open and short circuit fault sensor removal and device type
Terminals	Loop +ve in/out Loop -ve in/out Cable screen continuity REM LED +ve REM LED -ve
Operating voltage	16-22 volts DC
Application	Indoor installation
EN60529 rating	IP42
Temperature range	-10°C to +75°C
Humidity range	20% to 95% RH (non condensing)
EMC	CE marked (EEC89/336)
Material	Moulded ABS
Dimensions	108mm (Dia) x 18mm (H)
Colour	White
Weight	52g
Publication No	PS1241

### Ordering Information

Part No.	Description
ZP7-SB1	Analogue sensor base - surface mounting

