

# entrowatch®

ACCESS CONTROL THE WAY FORWARD

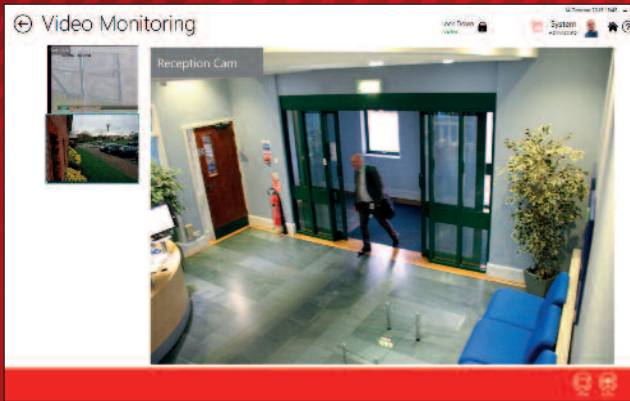
**EntroWatch v1.3** continues to break new ground in the access control security management market expanding its sophisticated array of key standard features – many of which would be costly add-ons compared to its competitors.



## KEY FEATURES

- ONVIF Profile S video client with live view monitoring
- One-to-many peer to peer I/O mapping
- Programmable manual, automatic and scheduled actions
- Global anti-passback
- Interlock facility
- Global lockdown
- Fire door support
- Custom badge designer
- Passback and PIN immunity
- Custom card format editor
- Attendance reporting suite
- Biometric reader support

# TRULY THE WAY FORWARD IN ACCESS CONTROL



Global lockdown provides a single click action to lock down all doors in the event of an emergency. The lock down icon appears at the top of every screen in EntroWatch. Specified doors can be excluded from the automatic lockdown.

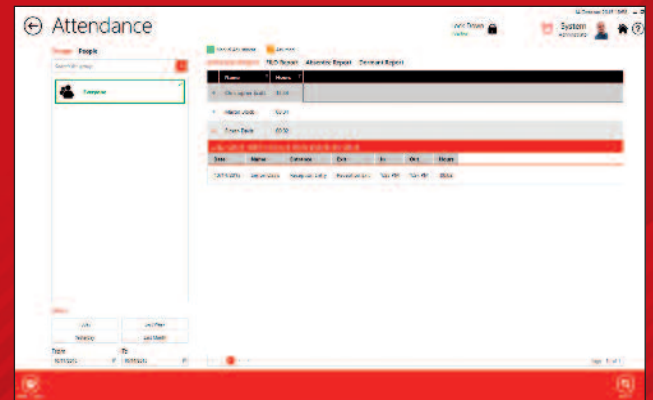
EntroWatch supports the automatic discovery and display of any ONVIF Profile S CCTV camera. Discovered cameras are automatically displayed in sequence on the EntroWatch dashboard and can be included in graphics. Snapshot capture of any camera is also featured.



Actions can be configured to operate automatically (e.g. fire alarm), via schedule (e.g. disable alarms during office hours) or via operator instruction (e.g. turn on all the floodlights). All actions are configured in the EntroWatch host and downloaded to the panels for autonomous operation. Peer to peer operation is also supported.



EntroWatch supports attendance reporting with a number of standard reports available for printing and export including Daily Attendance, "First In / Last Out", Absence and Dormancy. Supervisor enabled working time adjustment to facilitate more accurate reporting.



## PC Requirements

### Recommended

Windows 8.1 64-bit  
i7 Processor  
1920 x 1080 Screen Resolution

8GB RAM

SSD hard drive with at least 60gb of free space

10/100/1000 Ethernet

### Minimum

Windows 7 32-bit SP1  
Intel Core 2 Duo Processor  
1600 x 900 Screen Resolution

4GB RAM

Hard drive with at least 60gb of free space

10/100 Ethernet

## FOR MORE INFORMATION ABOUT ENTROSTAR

Call: +44 (0) 1244 286 495

or visit [entrowatch.com](http://entrowatch.com)

Remsdaq Limited, Parkway, Deeside Industrial Park,  
Deeside, Flintshire, CH5 2NL United Kingdom  
[remsdag.com](http://remsdag.com)



Security Management Solutions

Perimeter Fibre Detection

Access Control Systems

# remsdag